

DOT **9100TLC P** LED
 DOT **9100TLS P** LED
 TRIMLESS PERFORMANCE SERIES

DOT **LED**



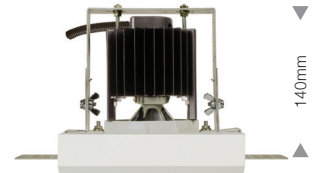
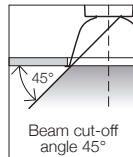
CURVED PROFILE



STRAIGHT PROFILE

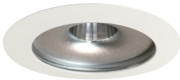


CREE CXA
 CRI Value: ≥ 80
 MacAdam: 3



MODELS (Reflector Options)

Narrow Beam – 33° Beam Angle



/4

Wide Beam – 65° Beam Angle



/8

CURVED PROFILE (TLC)



STRAIGHT PROFILE (TLS)



155 x 155mm sq.



135 x 135mm sq.

Round trim white A920/01 fitted to downlight as standard.

Silver Reflector – Narrow or Wide angle beam option
 Total Energy Consumption $P_L(W)$ – Refer LED Performance Guide below
 Weights: Curved Profile

Luminaire Body	350mA	1300 gms
Remote Driver	500mA/700mA	1400 gms
Remote Driver		100 gms

Weights: Straight Profile

Luminaire Body	350mA	1140 gms
Remote Driver	500mA/700mA	1240 gms
Remote Driver		100 gms

IEC 60598.1.2
 AS/NZS60598.1.2
 IP Rating

Complies
 Complies
 IP20

Dimming Options Available

- Analogue dimming 1-10 volt	AD
- DALI / switchDIM / DSI dimming	DALI
- Phase cutting (chopping) dimming	PHD

ORDERING CODE FORMAT

Example: DOT	91	3	8	TLC	P	/30	/DALI
Model Series Number (91)	↑	↑	↑	↑	↑	↑	↑
Driver Code (3: 350mA, 5: 500mA)		↑	↑	↑	↑	↑	↑
Beam Angle (4-Narrow or 8-Wide)			↑	↑	↑	↑	↑
Trimless Profile (TLC: Curved, TLS: Straight)				↑	↑	↑	↑
Series Code (C: Colour, P: Performance)					↑	↑	↑
LED engine colour (/30-830 or /40-840)						↑	↑
Dimming option if required (/AD, /DALI or /PHD)							↑



NOTE See overleaf for Performance Guide and Photometric Data

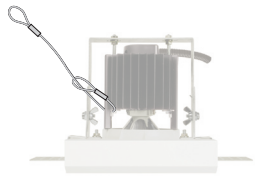
DOT **9100TLC P LED**
 DOT **9100TLS P LED**
 TRIMLESS PERFORMANCE SERIES



PROJECT SPECIFIC OPTIONS – Factory fitted

Seismic Restraint

Optional on all downlight models.



Ordering Code:
 /SR (required length)
 eg. /SR 400mm

LED GUIDE – DOT 9100TLP TRIMLESS PERFORMANCE SERIES

DOT Model No. /30 : 3000k /40 : 4000k	Trimless Profile	Luminaire Height	Driver Ordering Code	Driver current (mA)	CRI (Ra)	Wattage (W)	Lumens generated by LED engine B	Luminaire Output Lumens C	Luminaire efficacy (lm/W output)	Lifetime – LED engine (Hours @ L90)
DOT 9138TLC/30	Curved	140mm	3	350mA	80+	15.1	1300	1124	74.6	61,200
DOT 9138TLC/40 A	Curved	140mm	3	350mA	80+	15.1	1400	1190	78.8	61,200
DOT 9138TLP/30	Straight	140mm	3	350mA	80+	15.1	1300	1124	74.6	61,200
DOT 9138TLP/40 A	Straight	140mm	3	350mA	80+	15.1	1400	1190	78.8	61,200
DOT 9158TLC/30	Curved	175mm	5	500mA	80+	21.7	1700	1434	66.1	35,500
DOT 9158TLC/40 A	Curved	175mm	5	500mA	80+	21.7	1800	1530	70.5	35,500
DOT 9158TLP/30	Straight	175mm	5	500mA	80+	21.7	1700	1434	66.1	35,500
DOT 9158TLP/40 A	Straight	175mm	5	500mA	80+	21.7	1800	1530	70.5	35,500

A Figures extrapolated / interpolated from data at other currents.

B Lumens generated : LED Engine lumens before downlight losses incurred.

C Output Lumens : Delivered lumen output from downlight, including thermal, electrical and optic losses.
 – Slight variation may occur with Trimless Options.

350 mA
 CREE CXA
 LED



500 mA
 CREE CXA
 LED

